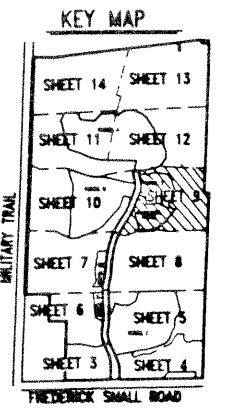
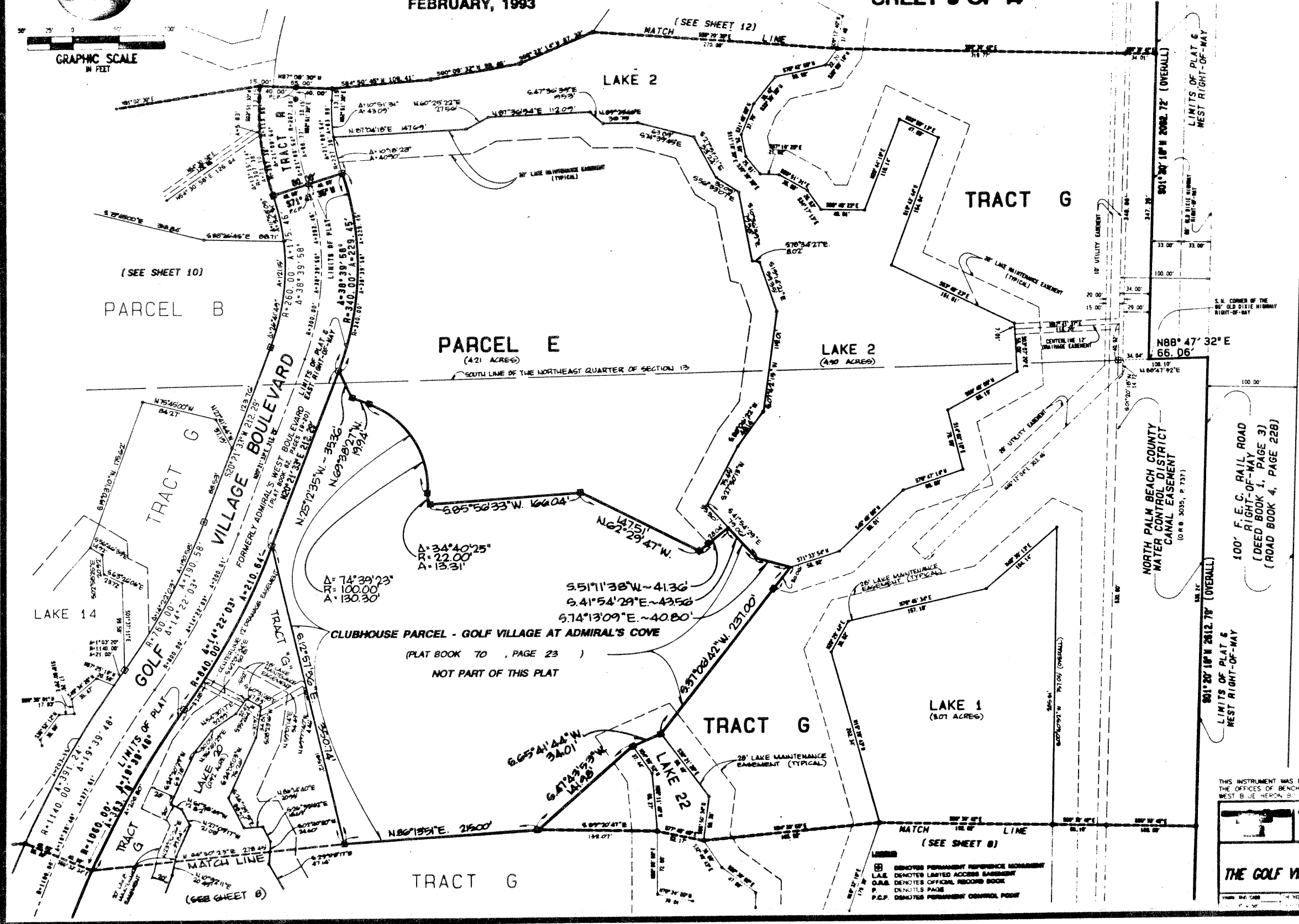


THE GOLF VILLAGE AT ADMIRAL'S COVE

BEING A REPLAT OF A PORTION OF ADMIRAL'S COVE WEST PLAT NO. 1, AS RECORDED IN PLAT BOOK 62, PAGE 19, PUBLIC RECORDS, PALM BEACH COUNTY, FLORIDA, AND LYING IN SECTION 13, TOWNSHIP 41 SOUTH, RANGE 42 EAST, TOWN OF JUPITER, PALM BEACH COUNTY, FLORIDA
 FEBRUARY, 1993
 SHEET 9 OF 14

59

70 59



11806

THIS INSTRUMENT WAS PREPARED BY WM. R. VAN CAMPEN, IN AND FOR THE OFFICES OF BENCHMARK LAND SURVEYING & MAPPING, INC. 4152 WEST BLUE HERON BLVD., SUITE 101, PALM BEACH, FLORIDA

BENCHMARK
 LAND SURVEYING & MAPPING, INC.

RECORD PLAT
 THE GOLF VILLAGE AT ADMIRAL'S COVE

- Ⓢ DENOTES PERMANENT REFERENCE MARK
- L.A.E. DENOTES LIMITED ACCESS EASEMENT
- O.A.E. DENOTES OFFICIAL RECORD BOOK
- P. DENOTES PAGE
- P.C.P. DENOTES PERMANENT CONTROL POINT